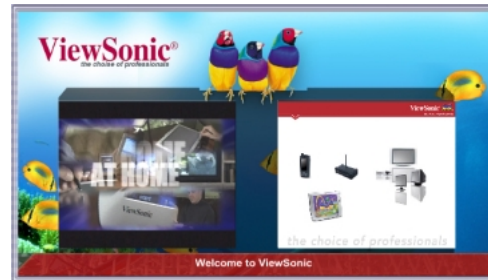


**DisplayIt!** from Best Wave is the easiest way to create and schedule content on a network of digital displays. It offers a degree of functionality and ease of use that is unrivaled in the industry. Here are a few of its benefits:

- Allows non-technical people to create, and manage a powerful digital sign program. **DisplayIt!** signs look attractive and professional. **DisplayIt!** gives you Multi-Zone displays - with images, Flash, Video, Scrolling Text and PowerPoint Presentations - all without programming!
- License and maintenance fees are scaled - so small networks are inexpensive, and large networks enjoy a lower per-display cost.
- Administration is a snap, with check-boxes for each user and password combination controlling the functions that user may perform. Presentations may be locked, or created by one user, and approved by another. Perfect for educational institutions and departmental sign programs.

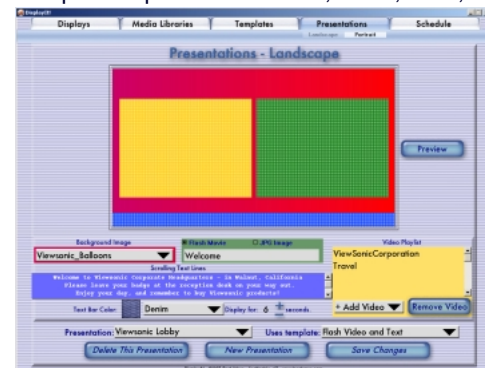


- Setup takes only minutes. Once the name and address of each display is entered, users can refer to displays by name.

**DisplayIt!** software works with the NMP-500, NMP-530, and ND-4210W media players from ViewSonic, and the Cisco Digital Media Player 4300G and almost any HD LCD or Plasma screen.



- Many types of content may be imported into **DisplayIt!** libraries, including video, images, Flash movies, text, and even web pages designed for display on a digital sign. UDP and RTP video streams are also supported. That allows live camera or other video feeds to be displayed in a zone or the entire screen.
- Demonstration copies of FlashPoint and FlashSpring are included with **DisplayIt!**. These programs add a menu to Microsoft PowerPoint, that exports a PowerPoint slide show to Flash for use with **DisplayIt!**
- Templates may be created inside of **DisplayIt!**. Templates allow precise placement of text, video, flash, and background images on the digital display. Templates are created by placing and dragging rectangles for each media type (zone). There are buttons for centering, and setting the aspect ratio of each media type.
- By combining a predefined template, and media from the content libraries, a user may quickly create a presentation that is ready to schedule. Each presentation may include text messages, a playlist of movies, and other media elements. Any presentation may be previewed on screen – or sent immediately to a digital sign.



- The **DisplayIt!** scheduler puts the scheduled presentation onto each display automatically, 24 hours a day, 7 days a week. Scheduled events (including video off) may be repeated for any number of days, weeks, months, weekdays, or weekends.
- You may schedule named groups of displays, rather than one-at-a-time.
- **DisplayIt!** logs every event, as it occurs, in an Excel spreadsheet for rapid data analysis.

# DisplayIt! Software Components

**DisplayIt!** is not one piece of software, but a family of integrated components. Each component serves a specific function. Some components must be used, others are optional. The current **DisplayIt!** components are listed on this page.



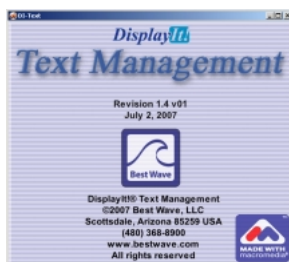
**DisplayIt!** is the software you will use for defining your display network, loading media files, creating digital sign templates, adding media to templates to create presentations, and then, scheduling presentations onto your digital signs. It may be run from one or more workstations (additional license fees apply). It only has to be running when creating content or scheduling signs.



**DI Robot** watches your schedule, and, when any display in the network needs to be changed, DI Robot will do that. DI Robot comes in two versions, one that is minimized on the task bar, and another that runs as a background process. After you have scheduled content, one of these two should be running at all times, either on the server or on a workstation that is not turned off at night.



**DI-Transport** is the program that “pushes” presentations onto the local storage of the media players in the network. It does this via FTP protocol. Having media local to the player reduces the amount of network traffic by virtually eliminating streaming of content. More than one instance of DI Transport may be run for larger networks.



**DI-Text** is a simple way for a receptionist or other person in your organization to change the text being shown on a presentation, but nothing else.

This is a great way to greet visitors to a facility, or make other timely announcements quickly and easily.



**DI-Now!** is an interactive way to change one or more displays instantly. This is useful in emergency situations to broadcast a warning message.

It is also useful when there are multiple service lines, with a display over each, that is used to identify or promote the service being offered or if the line is open.